

# TopTex Winter Protection Fabric

500 348 | 11.2001



## Protection for your plants against frost, dessication, and UV light

TopTex Winter Protection Fabric perfectly protects your plants against cold winds, extreme fluctuations of temperature and harmful excessive UV radiation by the sunlight.

Vital exchange of gases is guaranteed. Due to the **controlled microclimate**, plants remain healthy and secure.

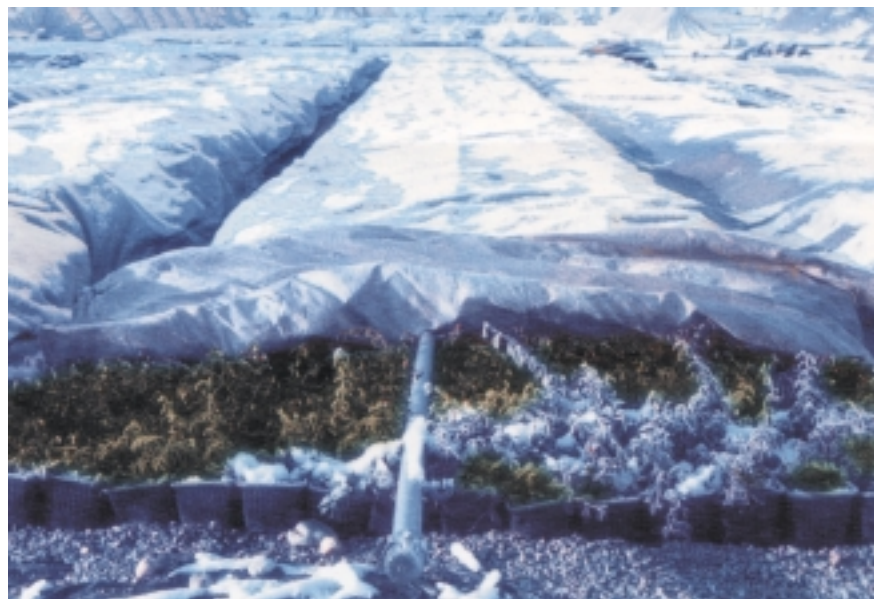
### Areas of application

#### → Ground covering :

For plants less sensitive to pressure, it can be easily anchored to the ground; playing fields and lawns can therefore be protected from frost damage.

#### ↓ Tunnel covering :

For sensitive plants.



#### Further areas of application:

1. offers effective protection for sensitive seeds
2. for tree nurseries, as a cultivation aid during the summer after replanting.

### TopTex Winter Protection Fabric

- ✓ ... withstands winds - no buffeting
- ✓ ... is therefore not prone to tearing, like a thin PE film
- ✓ ... allows exchange of gases, allowing plants to breathe and avoid plant disorders
- ✓ ... is UV stabilised
- ✓ ... can therefore be used for several years

# TopTex

## Winter Protection Fabric

### Protection in Extreme Temperatures

Wide temperature variations are balanced out by TopTex.  
(see Diagram 1)

When the air temperature is subject to wide variations, the temperature in uncovered pots drops rapidly, whereas in pots covered with Toptex the levels are reduced but constant.  
(see Diagram 2)

#### Reference:

**Test series of Technical University Vienna**, daily average values from 13/12/1989 to 21/01/1990

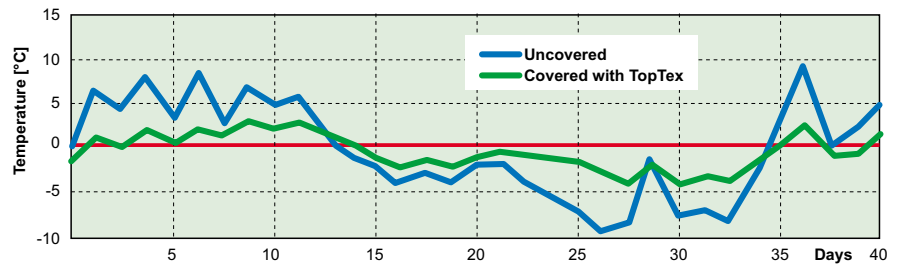


Diagram 1: Air temperature

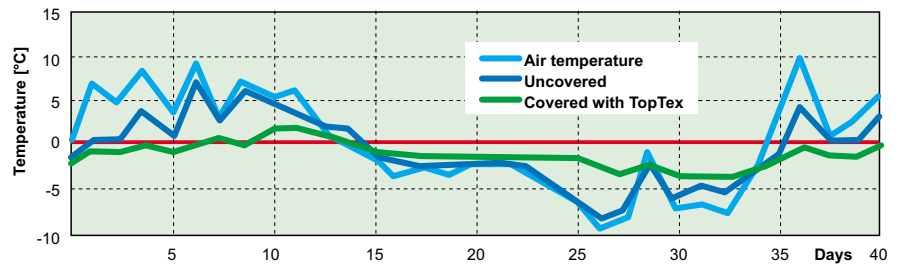


Diagram 2: Substrate temperature (plant pots)

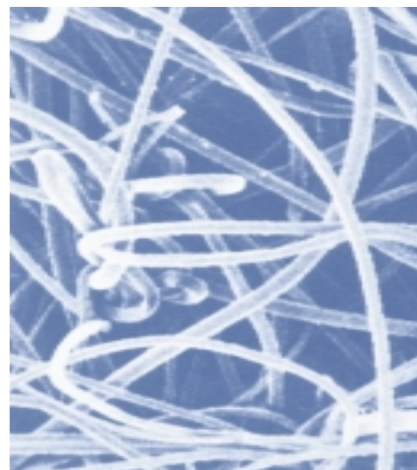
### TopTex Winter Protection Fabric

- Creates a barrier against wind chill and UV light, nullifying extremes of temperatures
- Allows breathing and creates a "plant-friendly" environment
- Allows water absorption: whether laid on the ground or in the "tunnel method", precipitation is carried within the fabric
- TopTex is tear resistant (tensile strength 6.8 kN/m), puncture resistant, UV stabilised, and wind resistant (no "sailing")
- Provides necessary light absorption of 30 - 40%

### Product Description

TopTex is a nonwoven needle-punched geotextile manufactured from endless filaments of polypropylene.

TopTex is recyclable!



### Storage

Protect from sunlight during the summer months to ensure durability.

### Forms of Supply

All rolls are 130 m long, and are available in three widths:

Width m	2.20	2.80	4.90
Weight kg	33	42	75

**Polyfelt Ges.m.b.H.**  
Schachermayerstrasse 18, A-4021 Linz, Austria  
Tel. +43 732 6983 0, Fax +43 732 6983 5353  
service@polyfelt.com

Your TopTex partner:

*The information in this brochure corresponds to our current knowledge levels, and as new scientific data becomes available statements may be revised. Any claims or liability, either expressed or implied, especially for patent injuries, cannot be derived from it.*

